



Noise Monitoring Result

Day Time (0700 - 1900hrs on normal weekdays)

Location: M1a - Harbour Road Sports Centre

Date	Time	Weather	Measurement Noise Level			Baseline Level	Construction Noise Level	Limit Level
			Leq	L10	L90	Leq	Leq	Leq
Unit: dB(A), (30-min)								
28/12/2016	14:04	Fine	75.8	77.5	73.5	72	73	75
3/1/2017	15:55	Fine	74.3	76.5	71.0	72	70	75
10/1/2017	13:00	Fine	70.0	71.5	68.5	72	70	75
19/1/2017	13:37	Fine	74.6	76.5	71.5	72	71	75
23/1/2017	11:00	Fine	74.3	76.0	70.5	72	70	75

Location: M2b - Noon-day gun area

Date	Time	Weather	Measurement Noise Level			Baseline Level	Construction Noise Level	Limit Level
			Leq	L10	L90	Leq	Leq	Leq
Unit: dB(A), (30-min)								
28/12/2016	15:00	Fine	67.0	68.0	64.5	68	67	75
3/1/2017	16:38	Fine	67.2	68.5	65.0	68	67	75
10/1/2017	14:00	Fine	67.1	68.5	65.0	68	67	75
19/1/2017	14:26	Fine	67.7	69.0	65.5	68	51	75
23/1/2017	10:10	Fine	69.2	71.5	66.0	68	64	75

Location: M3a - Tung Lo Wan Fire Station

Date	Time	Weather	Measurement Noise Level			Baseline Level	Construction Noise Level	Limit Level
			Leq	L10	L90	Leq	Leq	Leq
Unit: dB(A), (30-min)								
29/12/2016	14:05	Fine	66.1	67.5	63.5	69	66	75
3/1/2017	13:00	Fine	64.3	66.0	61.5	69	64	75
10/1/2017	14:45	Fine	65.9	67.0	64.0	69	66	75
18/1/2017	13:00	Cloudy	67.0	68.5	65.5	69	67	75
24/1/2017	08:10	Fine	67.0	68.0	66.0	69	67	75

Location: M4b - Victoria Centre

Date	Time	Weather	Measurement Noise Level			Baseline Noise Level	Construction Noise Level	Limit Level
			Leq	L10	L90	Leq	Leq	Leq
Unit: dB(A), (30min)								
29/12/2016	14:45	Fine	65.7	67.5	61.5	67	66	75
3/1/2017	13:40	Fine	64.2	66.5	61.5	67	64	75
10/1/2017	15:25	Fine	66.3	68.5	63.0	67	66	75
18/1/2017	13:40	Cloudy	64.9	66.0	62.5	67	65	75
24/1/2017	09:00	Fine	65.0	66.5	63.5	67	65	75

Location: M5b - City Garden

Date	Time	Weather	Measurement Noise Level			Baseline Level	Construction Noise Level	Limit Level
			Leq	L10	L90	Leq	Leq	Leq
Unit: dB(A), (30min)								
29/12/2016	15:25	Fine	69.6	71.5	66.0	68	64	75
3/1/2017	14:26	Fine	68.0	68.5	64.0	68	68	75
10/1/2017	16:10	Fine	68.0	69.5	65.0	68	68	75
18/1/2017	14:21	Cloudy	66.1	67.5	64.0	68	66	75
24/1/2017	09:48	Fine	67.8	68.5	65.0	68	68	75

Location: M6 - HK Baptist Church Henrietta Secondary School

Date	Time	Weather	Measurement Noise Level			Baseline Level	Construction Noise Level	Limit Level
			Leq	L10	L90	Leq	Leq	Leq
Unit: dB(A), (30-min)								
29/12/2016	16:05	Fine	67.4	68.5	65.5	71	67	70
3/1/2017	15:02	Fine	67.6	68.5	66.0	71	68	70
10/1/2017	16:50	Fine	66.9	68.0	65.5	71	67	70
18/1/2017	15:00	Cloudy	66.3	68.0	63.5	71	66	70
24/1/2017	10:25	Fine	68.0	69.0	65.5	71	68	65



Noise Monitoring Result

Day Time (0700 - 1900hrs on normal weekdays)

Location: M7e - International Finance Centre (Eastern End of Podium) (Reference Station)

Date	Time	Weather	Measurement Noise Level			Baseline Level	Construction Noise Level	Limit Level
			Leq	L10	L90	Leq	Leq	Leq
Unit: dB(A), (30-min)								
29/12/2016	08:30	Fine	64.0	65.0	63.0	67	64	N/A
6/1/2017	08:00	Fine	65.0	66.0	62.0	67	65	N/A
10/1/2017	08:30	Fine	66.0	67.0	65.5	67	66	N/A
16/1/2017	08:35	Cloudy	66.5	67.0	65.0	67	67	N/A
27/1/2017	08:30	Fine	64.0	65.5	63.0	67	64	N/A

Location: M7w - International Finance Centre (Western End of Podium)

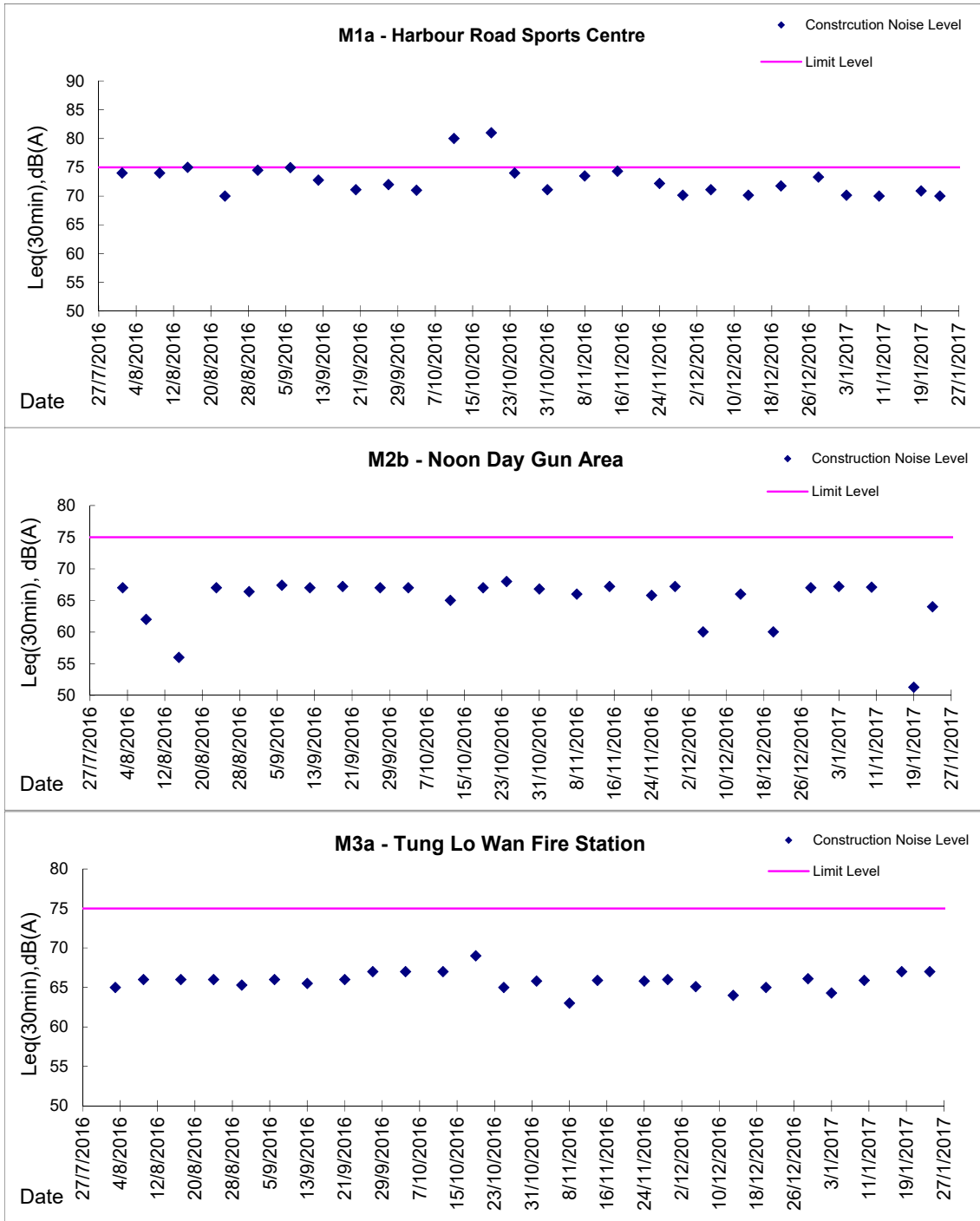
Date	Time	Weather	Measurement Noise Level			Baseline Level	Construction Noise Level	Limit Level
			Leq	L10	L90	Leq	Leq	Leq
Unit: dB(A), (30-min)								
29/12/2016	09:35	Fine	63.0	64.5	61.5	69	63	75
6/1/2017	08:35	Fine	63.0	64.5	62.0	69	63	75
10/1/2017	09:30	Fine	65.0	66.0	63.0	69	65	75
16/1/2017	09:45	Cloudy	64.0	65.0	63.5	69	64	75
27/1/2017	09:35	Fine	65.0	65.5	63.5	69	65	75

Location: M8 - City Hall

Date	Time	Weather	Measurement Noise Level			Baseline Level	Construction Noise Level	Limit Level
			Leq	L10	L90	Leq	Leq	Leq
Unit: dB(A), (30-min)								
29/12/2016	10:30	Fine	68.5	70.0	67.0	64	67	70
6/1/2017	09:20	Fine	67.5	68.5	66.0	64	65	70
10/1/2017	10:35	Fine	68.0	69.0	66.5	64	66	70
16/1/2017	10:50	Cloudy	69.0	70.5	67.5	64	67	70
27/1/2017	10:35	Fine	67.0	68.0	66.5	64	64	70

Graphic Presentation of Noise Monitoring Result

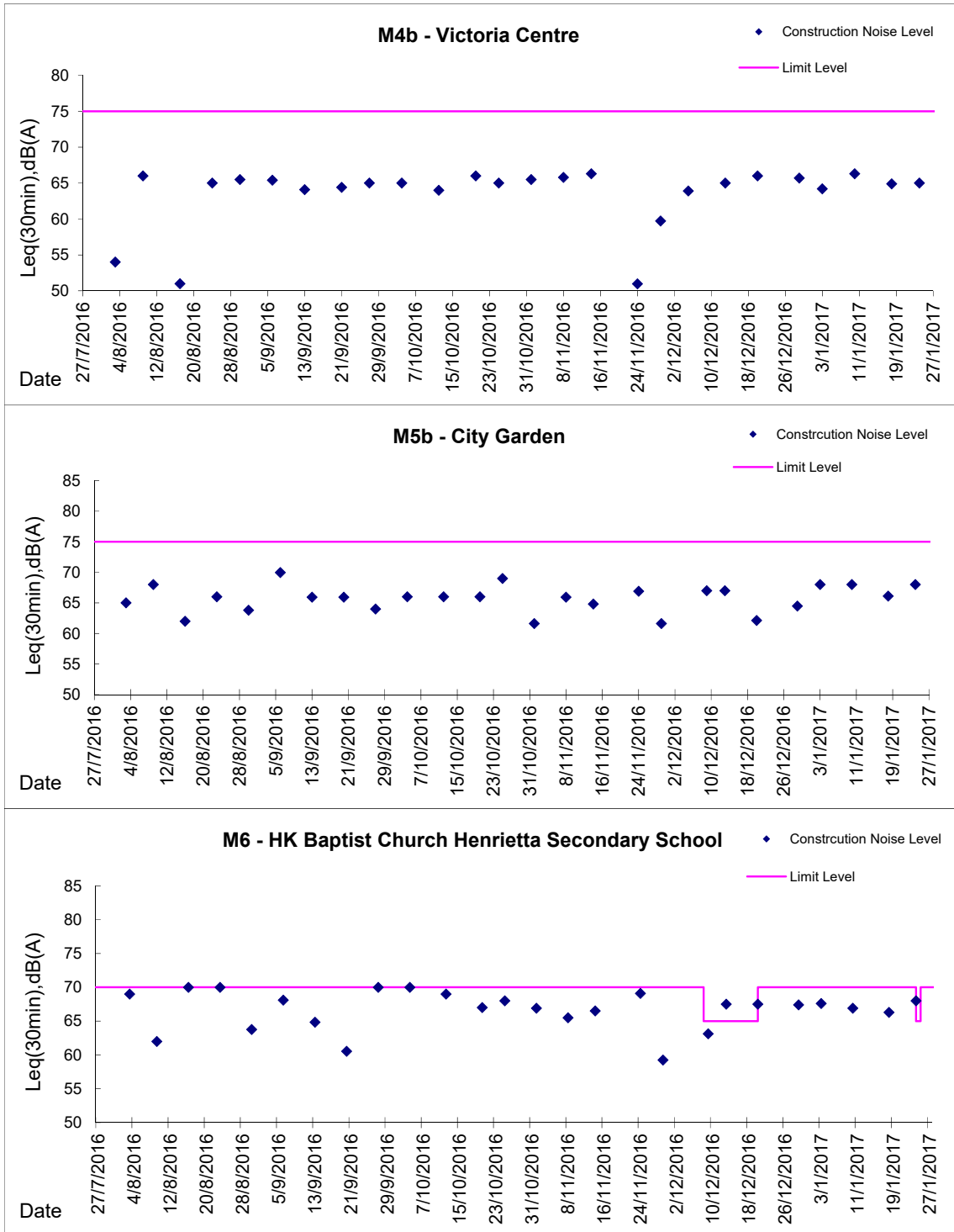
Day Time (0700 - 1900hrs on normal weekdays)





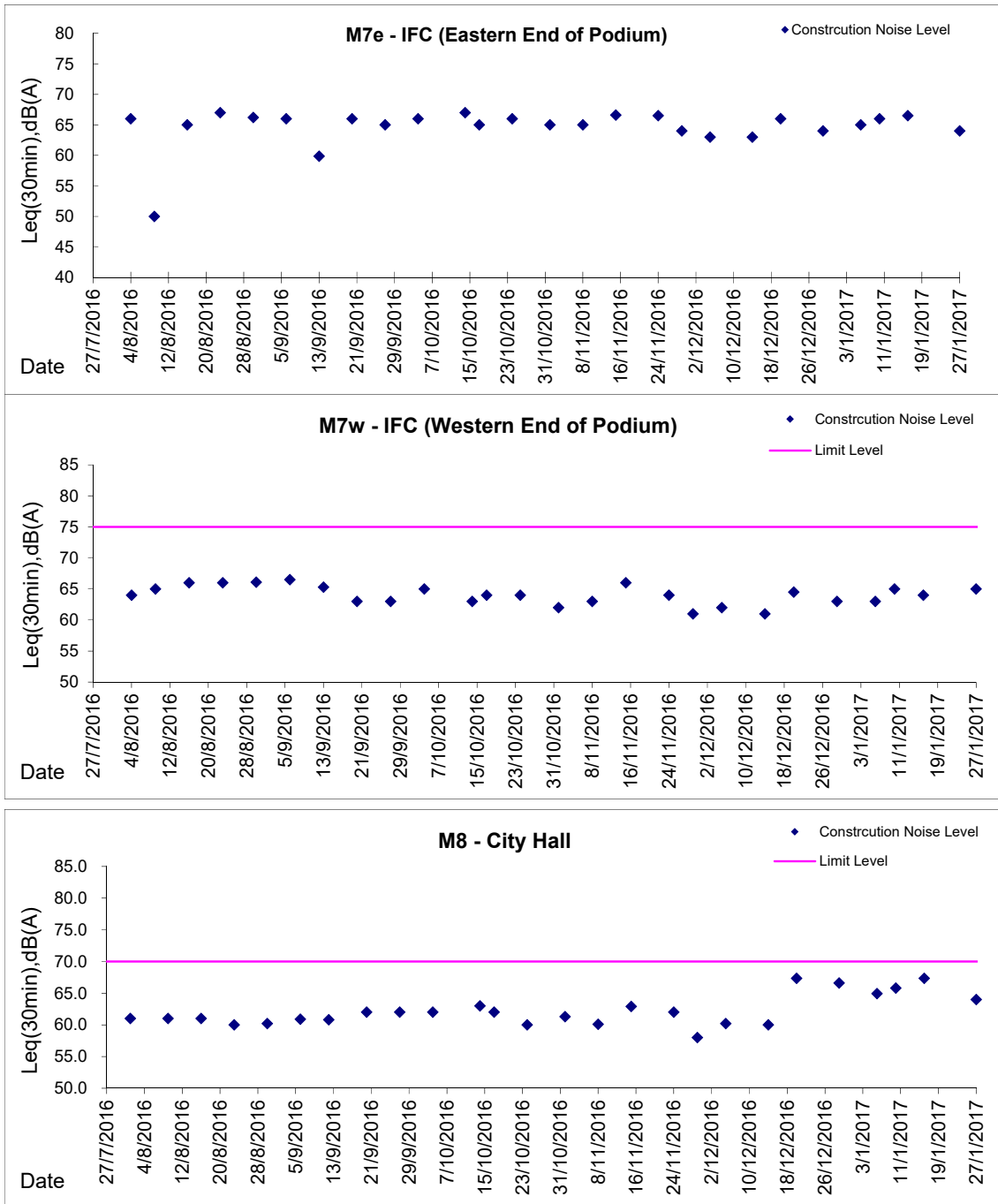
Graphic Presentation of Noise Monitoring Result

Day Time (0700 - 1900hrs on normal weekdays)



Graphic Presentation of Noise Monitoring Result

Day Time (0700 - 1900hrs on normal weekdays)



* Remark: M7e - IFC (Eastern End of Podium) is a reference monitoring station